

Nurse-Led Forum for Vaccine Confidence

Preparing the Workforce for Vaccine Rollout

Friday, April 9, 2021 at 1:00 pm Eastern Time



Kelly A. Wolgast, DNP, RN, FACHE, FAAN

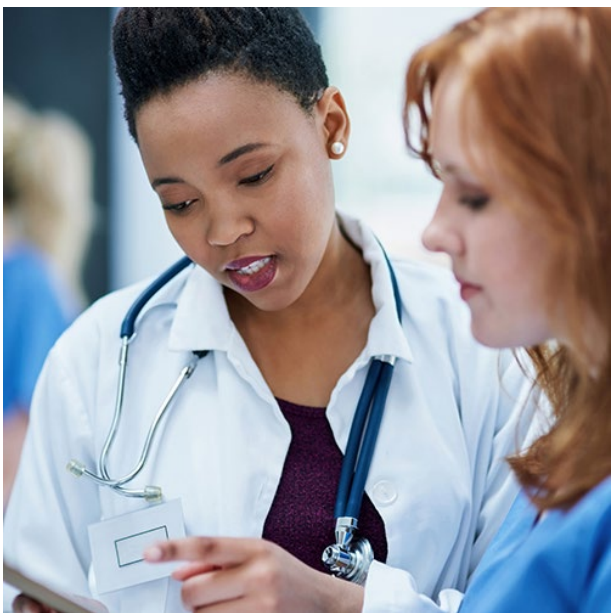
COL (R), U.S. Army

Director, COVID-19 Operations Control Center
(COCC), The Pennsylvania State University



**NATIONAL
NURSE-LED CARE
CONSORTIUM**
a **PHMC** affiliate

National Nurse-Led Care Consortium



The **National Nurse-Led Care Consortium (NNCC)** is a membership organization that supports nurse-led care and nurses at the front lines of care.

NNCC provides expertise to support comprehensive, community-based primary care and public health nursing.

- Policy research and advocacy
- Program development and management
- Technical assistance and support
- Direct, nurse-led healthcare services

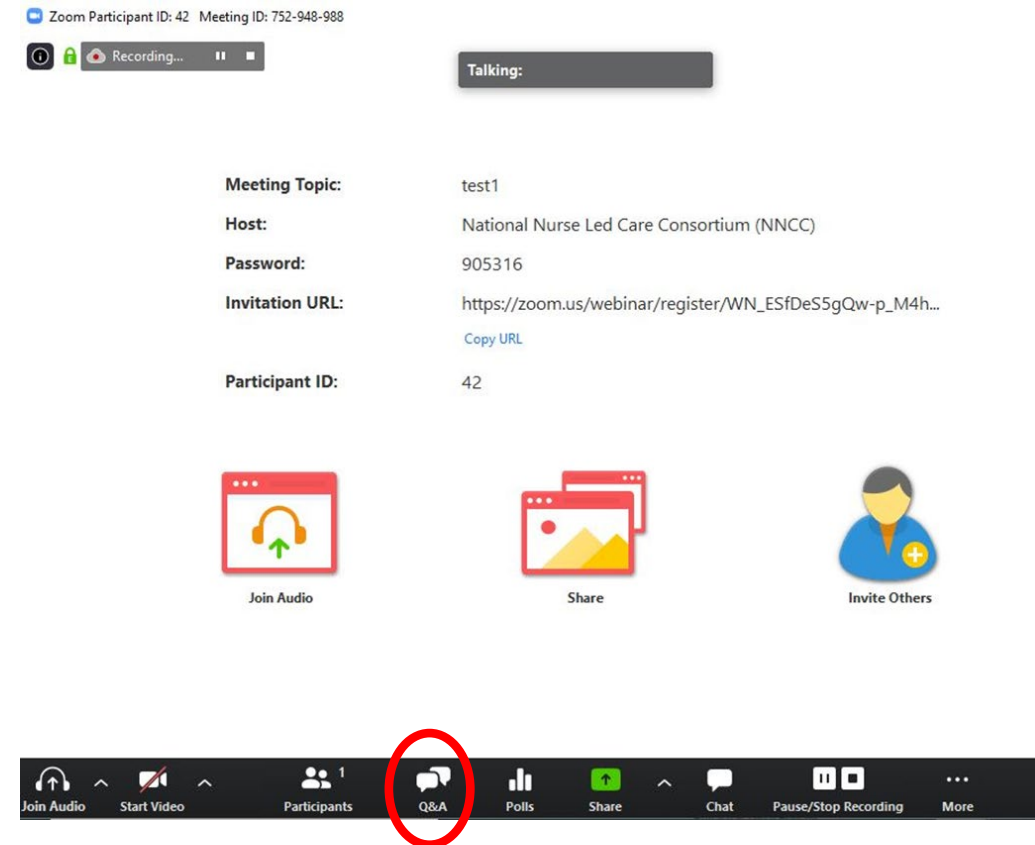
Housekeeping Items

Question & Answer

- Click Q&A and type your questions into the open field.
- The Moderator will either send a typed response or answer your questions live at the end of the presentation.

Continuing Education Credits

- Please complete the evaluation survey after today's training.
- Certificate will arrive within 3 weeks of completing the survey.



Nurse-Led Vaccine Confidence Project

NNCC is partnering with the Centers for Disease Control and Prevention (CDC) to build COVID-19 vaccine confidence among nurses and the communities they serve.

Through this project, NNCC strives to:

- Empower nurses with the necessary information to engage with care teams and communities about COVID-19 vaccines
- Provide learning opportunities to share up-to-date guidance, support peer engagement among nursing colleagues, and strengthen the nursing role
- Amplify the nursing voice by featuring everyday nurse champions through our podcast and other media.

Visit nurseledcare.org to learn more!



Nurse-Led Forum for Vaccine Confidence

Our aims are to create a bi-weekly forum to:

- Explore questions around vaccine hesitancy
- Share strategies for building confidence in COVID-19 vaccines among nurses and communities they serve
- Learn perspectives from the field and promising practices for vaccine communications, partnerships, and decision-making

This webinar was funded in part by a cooperative agreement with the Centers for Disease Control and Prevention (grant number NU50CK000580). The Centers for Disease Control and Prevention is an agency within the Department of Health and Human Services (HHS). The contents of this resource center do not necessarily represent the policy of CDC or HHS, and should not be considered an endorsement by the Federal Government.

COVID Vaccine Updates

[Pfizer-BioNTech Announce Positive Topline Results of Pivotal COVID-19 Vaccine Study in Adolescents](#) (March 31,2021)

Updated CDC Guidance/Resources:

[COVID-19 Vaccination Toolkits](#) (4/8/21)

[Performing Broad-Based Testing for SARS-CoV-2 in Congregate Correctional, Detention, and Homeless Service Settings](#) (3/29/21)

[Operational Strategy for K-12 Schools through Phased Prevention](#) (3/19/21)

COVID Vaccine Updates

Domestic Travel RECOMMENDATIONS AND REQUIREMENTS	Not Vaccinated	Fully Vaccinated
Get tested 1-3 days before travel	✓	
Get tested 3-5 days after travel and self-quarantine for 7 days. Self-quarantine for 10 days if you don't get tested.	✓	
Self-monitor for symptoms	✓	✓
Wear a mask and take other precautions during travel	✓	✓

323515-A

Source: <https://www.cdc.gov/coronavirus/2019-ncov/travelers/travel-during-covid19.html#fully-vaccinated-people>

Poll Question 1

In what ways is your organization involved in COVID vaccine rollout?
(Select all that apply)

- A. Education/awareness
- B. Planning/logistics
- C. Vaccine administration
- D. Not currently involved, but planning to be
- E. Don't know
- F. Not applicable

Poll Question 2

What is your role in COVID vaccine rollout? (Select all that apply)

- A. Education/awareness
- B. Planning/logistics
- C. Vaccine administration
- D. Not currently involved, but planning to be
- E. Don't know
- F. Not applicable

Speaker



Kelly A. Wolgast, DNP, RN, FACHE, FAAN

COL (R), US Army

Director, COVID-19 Operations Control Center (COCC)

The Pennsylvania State University

Penn State University Vaccine Preparedness

Kelly A. Wolgast, DNP, RN, FACHE, FAAN
National Nurse-Led Care Consortium Webinar:
Preparing the Workforce for Vaccine Rollout
Friday, April 9, 2021



PennState

COVID-19 OPERATIONS CONTROL CENTER (COCC)

Learner Objectives

- Describe University vaccine preparedness approach and key elements
- Describe University engagement/awareness strategies



Overview of Penn State University

- Twenty-four (24) campuses geographically distributed in PA
 - Plus, the World Campus (virtual, global)
- Approximately 90K enrolled students
 - Over 40,000 at University Park (largest campus)
- 31,000+ full-time employees university-wide



COVID-19 Operations

- Initiated in July 2020
- Stemmed from University Task Force work on addressing COVID-19 impact
 - Academics, Research, Logistics, Environmental Health, Scientific, Health Services, Student Engagement, Communications, Vendor Relations
- Novel structure for operations
- COVID-19 Operations Control Center (COCC)
 - Director with executive level decision-making authority
 - Key personnel for IT and Data Management, Logistics, Epidemiology, Campus Liaisons, Communications, Laboratory, Student Affairs
 - Stood up operations for testing, contact tracing, quarantine/isolation and all related COVID-19 operations



Vaccine Preparedness Approach

- Collaborative (working group ~30 people)
- Anticipatory
- Independent model, hybrid model, or support model
- Indoor and outdoor concepts; large or small
- Inclusive of operational elements plus academic, research, and health services



Vaccine Preparedness Approach

- Leveraged strong government relations with DOH
 - Shared plans/willingness to support with DOH early this year
- Projected need for logistics, manpower, and technology
- Invested in the resources we knew we needed
 - Dual use in another part of University if not needed for vaccine efforts
- Integrated legal perspective early in the process



Key Elements

- Communications
 - Internal and external
- Space
 - CAD designs
- Logistics
 - Freezers, refrigerators, storage, signage, parking, security, sanitation, red bag/container disposal
- Manpower Assessment
 - Nursing, Medicine, Pharmacy, Site Staffing, Volunteers



Key Elements

- Legal arrangements/contracts
- Technology
 - Reporting, equipment, bandwidth, secure access
- Government Relations
 - Local, State
- Keeping people engaged in planning/prep when timelines were not clear
- Executive leadership support and resourcing



Sustainment

- Preparations for students
 - Student vaccination/boosters
 - Investment in additional Electronic Health Record capacity
- Employee vaccine tracking
 - Potential for on-going vaccine booster program like Influenza program
- Overall University vaccine tracking using Salesforce



Engagement/Awareness Strategies

- Virusinfo.psu.edu
 - <https://virusinfo.psu.edu/vaccine-information/>
 - "What you need to know"
 - Expert Insights Video Series-*Penn State faculty experts help educate the community on the latest information related to the COVID-19 vaccine*
- Penn State Health/our Academic Medical Center in Hershey, PA
 - Their own vaccine awareness/education efforts
 - <https://www.pennstatehealth.org/coronavirus/vaccine>



Regional Vaccine Center (RVC)

- Cooperation with PA Commonwealth
- N. Central PA, Centre County, University Park
 - Bryce Jordan Center
- Announced on April 7, 2021
- Commenced April 9, 2021
- Capacity 1-3K/week; 8 hours/day; 5 days/week
- Penn State is proud to be part of this effort to thwart this pandemic

#WeAre



Thank You.



Pop-Up Question 1

What are some resources/tools that you found helpful in preparing for vaccine roll out?

Tell us in the chat box!

Pop-Up Question 2

How are you keeping staff engaged during vaccine roll out?

Tell us in the chat box!

Q&A



Nurse-Led Forum for Vaccine Confidence

NEW COVID WEBINARS

EVERY OTHER FRIDAY 1 - 2 pm ET

Visit NurseLedCare.org to register



**NATIONAL
NURSE-LED CARE
CONSORTIUM**
a **PHMC** affiliate

Vaccine Confidence Podcast Series

Vaccine Confidence: Nurses Turn Skepticism Into Action



At the Core of Care · Vaccine Confidence: Nurses Turn Skepticism Into Action
Vaccine Confidence: Nurses Turn Skepticism Into Action is the first episode in a six-part At the Core of Care podcast series about building confidence in the COVID-19...

[Read more...](#)

**First two episodes
available now**

[Listen here!](#)

Vaccine Hesitancy: Is Healthcare Listening?



At the Core of Care · Vaccine Hesitancy: Is Healthcare Listening? Vaccine Hesitancy: Is Healthcare Listening? is the second episode in a six-part At the Core of Care podcast series about building confidence in the COVID-19 vaccines. During this series,...

[Read more...](#)

THANK YOU

Special thank you to all our NNCC members who make exceptional nurse-led programming possible.



**NATIONAL
NURSE-LED CARE
CONSORTIUM**
a PHMC affiliate

Find more free continuing education opportunities

NurseLedCare.org



**NATIONAL
NURSE-LED CARE
CONSORTIUM**
a **PHMC** affiliate