

INSTITUTIONALIZING A CULTURE OF MORAL RESILIENCY WEBINAR SERIES

Part Six: The Unique Role of the NP to Mitigate Burn-Out in the Clinical Setting



**NATIONAL
NURSE-LED CARE
CONSORTIUM**
a PHMC affiliate

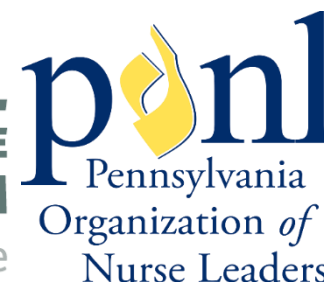


INTRODUCTION FROM PA ACTION COALITION

- **Jillian Bird, MSN, RN, Nurse Training Manager of the National Nurse-Led Care Consortium and Co-Lead for the PA Action Coalition Advisory Board**
- **Amy H. Ricords, MEd, BSN, RN, NPD-BC, Director of Nursing Professional Advancement for the PA Action Coalition**
- **Marion Burns Tuck, PhD, RN, NEA-BC, FACHE, Executive Director of the PA Organization of Nurse Leaders**
- **Sarah Hexem Hubbard, Esq., PA Action Coalition Executive Director**
- **Zaharaa Davood, PA Action Coalition Coordinator**
- **Jenny Horn, PA Action Coalition Manager**

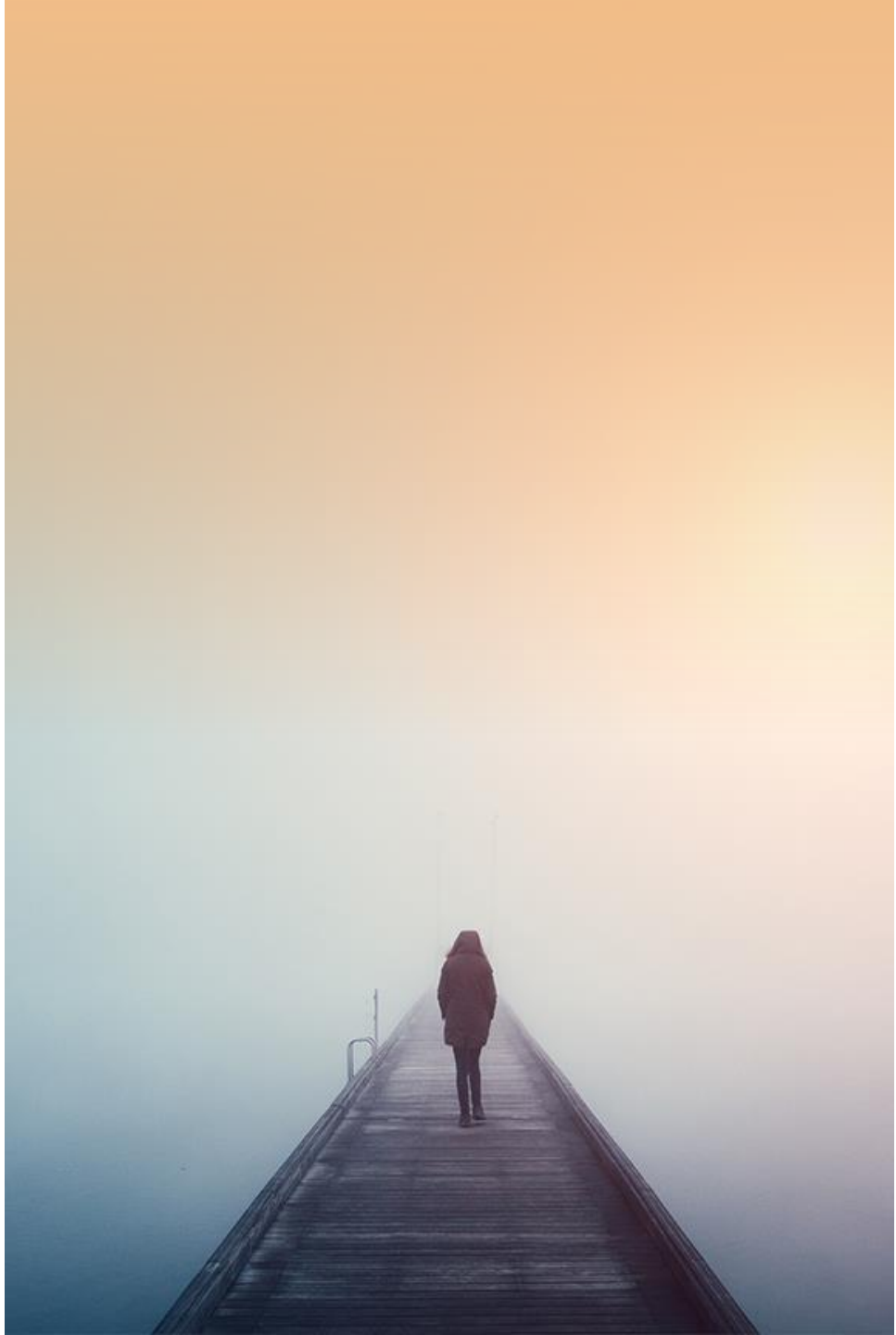


**NATIONAL
NURSE-LED CARE
CONSORTIUM**
a PHMC affiliate



Welcome







Cynda Rushton PhD, RN, FAAN
Bunting Professor of
Clinical Ethics & Nursing
Johns Hopkins University



Jillian Bird, MSN RN
Nurse Training Manager
National Nurse-Led Care
Consortium

Thank you

The conversation is open to comments, sharing and questions.

Two Ways to Join the Conversation:

- *To speak: “Raise Hand”
click "Participants" at bottom center of screen, then click "Raise Hand” on lower right side of screen. We will take you off mute.*
- *Chat: Enter your question or comment in the chat box on your screen.*

Everyone is currently muted to prevent background noise.

Frame our discussion today

- Unique role/challenges of the NP
- Mindfulness as a tool in practice
- Invitation for a reflective practice and discussion throughout the session

Mindfulness

Paying attention to the moment as it is, without judgment
supports skillful response

Reflective Practice: Journaling Moment

1. Considering work, what do you carry into setting
2. What patterns do you witness that build or break down community in your work setting
3. How do you typically respond to these patterns
4. How do you want to be responding to these patterns, if differently



An aerial photograph of a coastline, showing a large body of water on the left and a narrow strip of land on the right. The water is a deep blue, and the land is a lighter, textured blue. The text is overlaid on the bottom left of the image.

*Mindfulness
in the face of catastrophe*

**What are some exemplars of how
NP's have leveraged their role to
foster well-being and ethical
practice?**

Unique role of NP within the care team

- Role as change agent
- Leadership
- Building community
- Knowledge and skill to be responsive to building culture of resiliency and support
- Changing the narrative



CONNECT WITH US!

PA Action Coalition

Jenny Horn,
PA Action Coalition Manager
jhorn@phmc.org

Zaharaa Davood,
PA Action Coalition Coordinator
zadavood@phmc.org

PaActionCoalition.org

Nurse-Led Care Consortium

nurseledcare.phmc.org

Pennsylvania Organization of Nurse Leaders

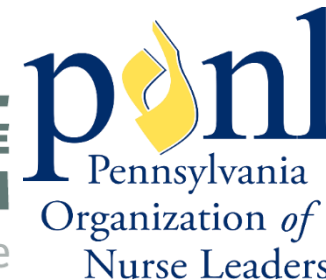
Marion Burns Tuck, PhD, RN, NEA-BC, FACHE,
Executive Director,
PA Organization of Nurse Leaders

mbtuck@ponl.net

PONL.net



**NATIONAL
NURSE-LED CARE
CONSORTIUM**
a PHMC affiliate

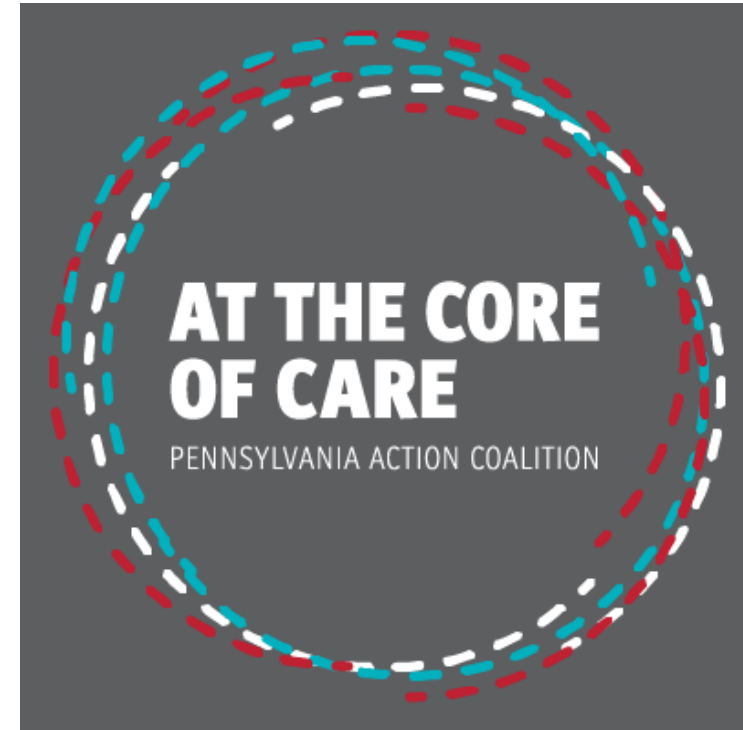


At the Core of Care Podcast

At the Core of Care highlights the consumer experience of patients, families, and communities and the creative efforts of nurses and other partners to better meet their health and healthcare needs through diversity, leadership, and practice innovation

COVID-19 Special Episode: [Nursing Student Perspective of COVID-19](#)

[Refugee Healthcare Up-Close, Part 2: Lancaster](#)



LGBTQIA + Health Resources Webinar Series

Partnership with the Bradbury-Sullivan LGBT Community Center

Part One: Informing Nursing Practice to Deliver Effective Healthcare to Sexual and Gender Minority Populations

- Wednesday, September 16, 2:30-3:00 PM
- Presented by: Perry N. Halkitis, PhD, MS, MPH
- Dean and Professor of Biostatistics and Urban-Global Public Health, Rutgers School of Public Health
- Director, Center for Health, Identity, Behavior & Prevention Studies (CHIBPS)
- Founding Editor in Chief, Annals of LGBTQ Public and Population Health



**NATIONAL
NURSE-LED CARE
CONSORTIUM**
a PHMC affiliate

