

***Strengthening Health Center Primary Care:
The Role of Nurse Practitioner Residency
Programs and Partnerships***



November 18th, 2025 | 3 pm EST

Zoom Orientation

1

Captions

To adjust or remove captions, click the “Live Transcript” button at the bottom of your Zoom window and select “Hide Subtitle” or “Show Subtitle.”

2

Questions

Please add your questions for the speaker in either the Q&A tab or in the Chat box.

3

Technical Issues

Please message us in the chat.

4

Recording

This session will be recorded and made available to participants.

CC

Live Transcript

Q&A

Questions



Raise Hand



Recording

Please say **Hi** in
the chat and enter
your name,
credentials,
location, role





The National Nurse-Led Care Consortium (NNCC) is a nonprofit public health organization working to strengthen community health through quality, compassionate, and collaborative nurse-led care through:

- training and technical assistance
- public health programing
- consultation
- direct care

To learn more about NNCC, please visit our website at www.nurseledcare.org.

Accreditation Statement

Accreditation Statement: The National Nurse-Led Care Consortium is accredited as a provider of nursing continuing professional development by the American Nurses Credentialing Center's Commission on Accreditation.

Successful Completion Requirements: Nurses completing the entire activity and the evaluation tool may be awarded a maximum of **1.0 contact hour** of nursing continuing professional development (NCPD). To obtain nursing continuing professional development contact hours, you must participate in the entire activity and complete the evaluation following the session.

Relevant Financial Relationships: It is the policy of the National Nurse-Led Care Consortium to require nursing continuing professional development program faculty and planning committee members to disclose any financial relationship with companies providing funding or manufacturers of any commercial products discussed in the educational activity. The program faculty and the planning committee members report they do not have financial relationships with any manufacturer of any commercial products discussed in the activity.



NNCC National Training and Technical Assistance Partnership (NTTAP)



Jillian Bird, MS, RN
Director of Training and Technical Assistance



Matt Beierschmitt, MPP
Assistant Director of Training and Technical Assistance



Fatima Smith, MPH, CHES
Project Manager



Regina Brecker, MPH, CHES
Project Coordinator



Lucy Lunay
Program Intern

Today's Agenda

5 min - Welcome

5 min - Background

- Nurse Practitioner residency programs addressing workforce gaps and improving care for special medically underserved patients

25 min- Myles Adamson, MSN, APRN, FNP-C
Hope Christian Health Center NP-led operations and upcoming residency program

15 min- Jen Calohan, RN, TQMP, SOLC, LSSBB

- Building Access through Nurse Practitioners

10 min - Questions & Wrap-Up



Health Challenges in Public Housing

Chronic Conditions

- Residents may be at higher risk for conditions like high blood pressure/hypertension, diabetes, obesity, and asthma.
- Cardiovascular disease and co-occurring substance use disorders are also prevalent among residents of public housing.
- Food insecurity is linked to high BMI and mental health impacts like depression and anxiety.
- Pest infestations can increase the likelihood of experiencing high depressive symptoms 3-5 fold.

Health Access

- Residents of public housing face additional challenges, including loss of continuity of care.
- Challenges integrating mental health care, substance use care, and non-medical factors of health into primary care.

How NPs Address Challenges

Nurse-Led Service

- NPs have close relationships with patients to assist them in making decisions regarding admittance, discharge, and referrals to other professionals.
- NPs support shared decision-making and screen for non-medical factors impacting health outcomes.

Necessary Skills

- Understanding of both medical and psychosocial problems, undertaking of a range of health and social assessments, particularly chronic conditions.

Ambulatory Care

- NPs are more likely to deliver care in larger, multispecialty practices.
- Patients with more complex conditions tend to receive more health visits when they have an NP as a predominant provider.
- Patients report feeling seen and heard through the trust they build with NP.



Subject Matter Expert



Myles Adamson, MSN, FNP-C

Chief Operating Officer, Hope Christian Health Center

EDUCATING PROVIDERS, TRANSFORMING COMMUNITIES

A Look at NP Residency and Outreach Program Development

Myles Adamson MSN, APRN

WHY NURSE PRACTITIONERS MATTER IN COMMUNITY HEALTH

- Nurse practitioners as drivers of innovation and access
- Mission of Hope Health Vegas: Serving special medically underserved patients
- Overview of presentation objectives



Hope
Christian
Health Center

NP-LED OUTREACH PROGRAMMING

Pandemic
Decreased
Access
2020

Partnership
with City of
Las Vegas at
the Courtyard
June 2021

Street
Medicine
Program
May 2024

Oct 2020


Mobilize
Healthcare with
Outreach Team

Sept 2023

Acquisition of
Mobile Unit

Aug 2025

15 Weekly
Partner Sites



***Your clinical judgment
shapes outcomes, but your
compassion shapes lives.
Never underestimate the
power of both.***

- Anonymous





DEVELOPING AN OUTREACH PROGRAM

- Identifying community needs.
- Recruiting and developing the right staff (compassion, drive, expertise).
- Forming and nurturing partnerships.
- Starting small and scaling up.

UNIQUE CHALLENGES IN OUTREACH CLINIC CARE

Staffing challenges:

- recruitment
- retention
- team roles

Patient care challenges:

- medication compliance
- preventive screenings
- environmental exposures
- billing

Patient barriers:

- housing, contact
- health literacy
- special medically underserved patients
- medication access
- transportation

Supply and capital cost challenges:

- mobility
- durability
- vehicle maintenance
- storage


Safety challenges:

- de-escalation
- protocols
- staff exposure



SUCCESSSES AND IMPACT

- Patient encounter data and outcomes.
- Stories of transformation and advancement.
- Expansion to 15 weekly primary care sites.
- Increased access for homeless and medically underserved patients.



Community leadership is the courage, creativity, and capacity to inspire participation, development, and sustainability for strong communities.

- Gustav Nossal






FUTURE NEEDS AND OPPORTUNITIES

- Trends in homelessness and outreach demand.
- Capital funding and housing as healthcare.
- Strategic recommendations for starting and growing outreach programs.



RESIDENCY PROGRAM DEVELOPMENT – STATUS & PROCESS

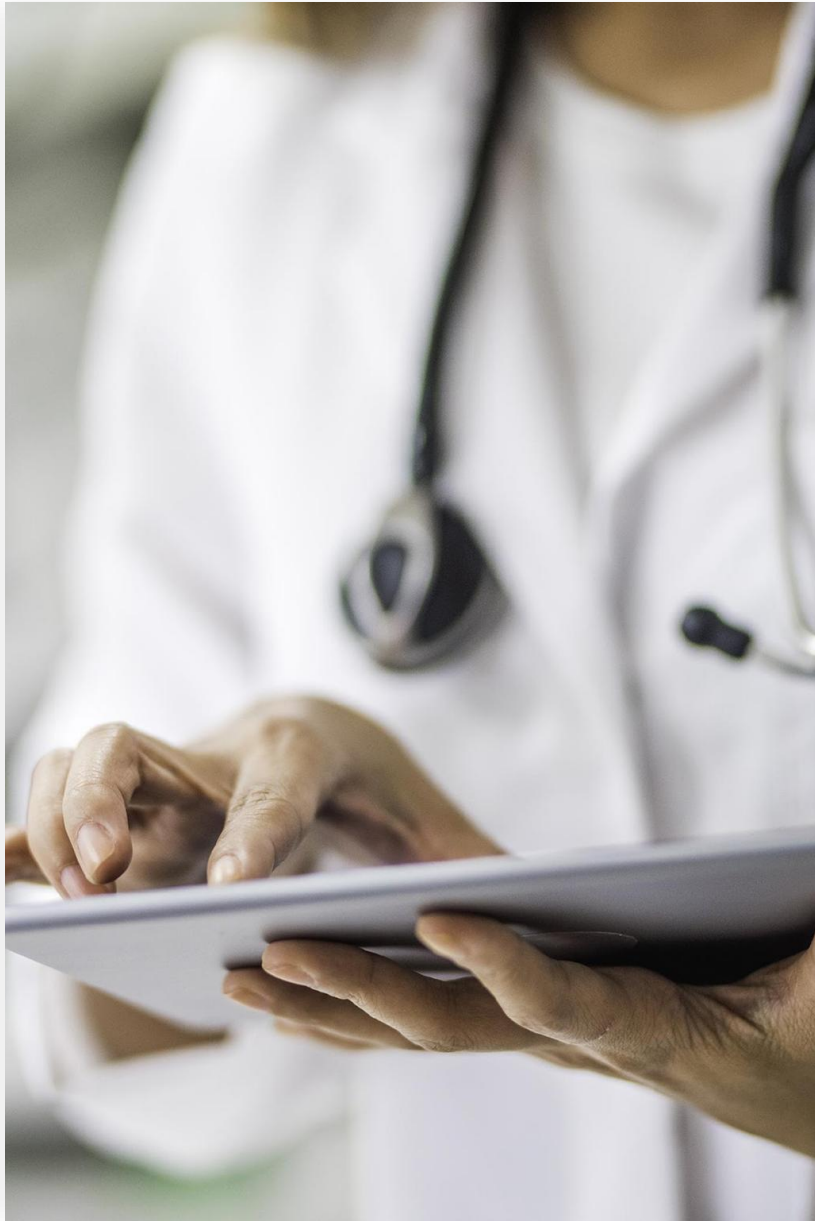
- Program not yet launched; processes in development.
- Supported by National Training and Technical Assistance Partners (NTTAPs) trainings.
- Team-based approach: leadership, coach, workgroups.
- Key deliverables: mission/vision, resource assessment, program structure, curriculum, recruitment tools.



Never lose an opportunity of urging a practical beginning, however small, for it is wonderful how often in such matters the mustard seed germinates and roots itself.

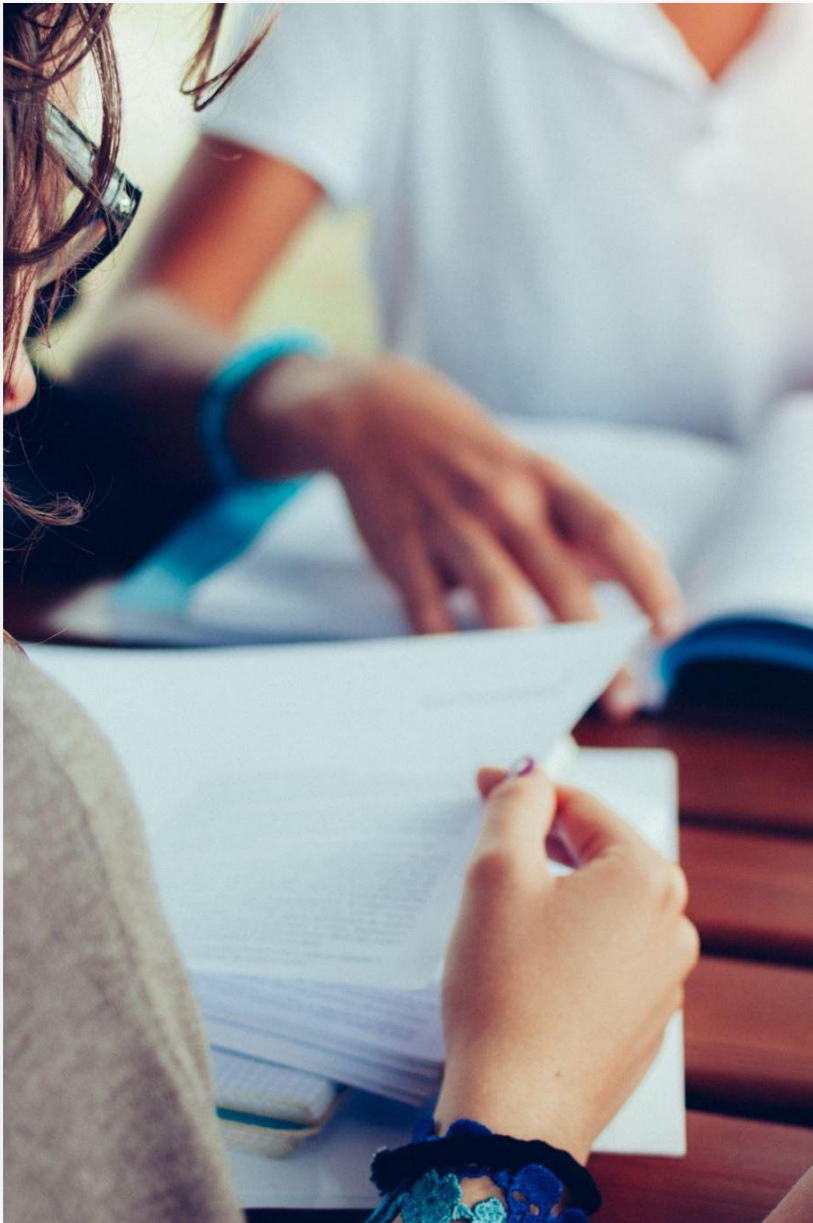
- Florence Nightingale





RESIDENCY PROGRAM IN DEVELOPMENT

- Recognized need for formal Nurse Practitioner residency training.
- Goals:
 - Enhance clinical readiness.
 - Strengthen outreach leadership.
 - Improve retention and satisfaction.
- Early Steps:
 - Program design initiated.
 - Curriculum planning underway.
 - Exploring partnerships and funding.



NP RESIDENCY PROGRAM STRUCTURE & TIMELINE

- Year 1: \$400k budget, foundational development.
- Year 2: \$200k budget, refinement and preparation.
- Year 3: Fully sustainable.
- Syllabus topics: quality improvement, team building, stakeholder analysis, curriculum development, accreditation, evaluation.



NP RESIDENCY PROGRAM GOALS AND OBJECTIVES

- Building the case for residency.
- Identifying clinical/financial resources.
- Developing structure and curriculum.
- Evaluating outcomes and impact.
- Preparing for accreditation.



STRATEGIC SHIFT—CLINIC-BASED TO COMMUNITY-BASED CARE

- Why traditional clinic models fall short for difficult to reach communities.
- The value of proactive, nurse practitioner-led outreach.
- Infusing compassion into community care
- Aligning strategy with mission and evolving community needs.



KEY TAKEAWAYS

- Nurse practitioners are uniquely positioned to lead outreach and mobile care initiatives.
- Residency programs strengthen clinical readiness and leadership capacity.
- Mobile medicine bridges gaps in transitional and special medically underserved patients
- Strategic shifts from clinic-based to community-based care require bold leadership.
- Collaboration, creativity, and community involvement are essential for success.
- Start small, stay focused, and build programs that reflect your community's needs.

Subject Matter Expert



Jennifer Calohan, RN

Chief Operating Officer, [HealthTalk A.I.](#)

The Role of Nurse Practitioners

IN ENHANCING ACCESS TO CARE -

Nurse practitioners lead efforts to enhance access to high-quality, patient-directed care, through the provision of comprehensive primary care services, the promotion of improved community health outcomes, and a reduction of both medical and non-medical barriers to care.



Presented by: Jennifer Calohan RN, TQMP, SOLC, LSSBB

Countless Benefits of NP Residency Programs:

For NP's -

- strengthen workforce stability
- provide structured mentorship, hands-on experience, and exposure to complex patient communities
- help nurse practitioners build confidence, clinical competence, and efficiency

For Healthcare Organizations -

- elevate the quality & continuity of patient care
- enhance recruitment and retention and reduce turnover
- ensure a highly skilled, mission-aligned provider workforce equipped to deliver high-quality and accessible patient care



**NP RESIDENCY
PROGRAM BENEFITS**

Benefits to NP Residency Programs:

- NP's have an intrinsic focus on serving the special medically underserved. Residency Programs allow their professional training to emphasize holistic, community-directed care and develop advanced skills that are crucial for bridging healthcare gaps.
- Residency Programs create more confident, skilled, and proficient nurse practitioners that are better prepared and able to practice effectively and provide critical access to care.

1. Enhanced Access in Rural & Underserved Communities



ENHANCED
ACCESS
TO CARE

Benefits to NP Residency Programs:

- Residency Programs bring essential support services and initiate vital public health projects focused on prevention and promoting healthy lifestyles.
- Residency Programs also work to change policies and augment resources to improve access to critical healthcare services.

2. Bring Essential Support Services to Communities in Need



ENABLING &
SUPPORT SERVICES

Benefits to NP Residency Programs:

- Residency Programs allow NPs to establish the critical underpinnings of high-trust relationships with patients that are vital to patient retention and patient activation.
- Residency Programs allow nurse practitioners to leverage the nursing model to enhance and strengthen patient relationships with a focus on the delivery of long-term, consistent care that is essential in the management of chronic conditions.

3. Improved Patient Relationships & Population Health



POPULATION HEALTH
& CARE MANAGEMENT

Benefits to NP Residency Programs:

- Residency Programs establish a pathway for long-term employment - therefore reducing provider turnover and creating an elevated level of workforce stability.
- Residency Programs lead to increased levels of continuity of care, fewer disruptions and delays in care, and greater levels of access to care in rural and special medically underserved communities.

4. Stabilize the NP Workforce



**NP WORKFORCE
STABILITY**

BUILDING ACCESS PROGRAMS ~

ESSENTIALS & CONSIDERATIONS

ACCESS PROGRAMS LEVERAGE MULTI-DISCIPLINARY TEAMS, RESOURCES & SERVICES TO REDUCE OR REMOVE BARRIERS TO CARE

- Enhanced Access
- Community Health Workers
- Nurse-Led Care
- Mobile Care
- Telehealth
- Street Medicine
- Virtual
- School-Based Clinics
- Communication Tools
- Community Health
- Patient Engagement
- Care Coordination
- Care Management
- Community-Based/Non Medical Drivers of Health
- Health-Related Needs
- Enabling Services
- Outreach & Enrollment

WHY NURSE-LED ACCESS TO CARE?

NURSE-LED ACCESS PROGRAM GOALS:

- Improve access to high-quality care.
- Establish patient-directed care delivery models.
- Address medical & non-medical barriers to care.
- Advance community health outcomes.
- Reduce non-medical drivers of health.
- Implement data-driven strategies.
- Develop programmatic models.
- Leverage cross-functional team-based care.
- Increase NP retention and satisfaction serving special medically underserved populations.



ACCESS PROGRAM ELEMENTS

Empanelment & Capacity Management

Continuity of Care

Schedule Management

Patient Retention, Attrition, & New Patient Growth

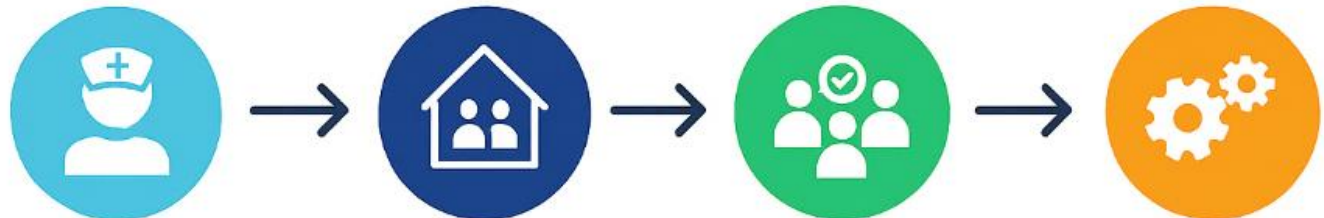
Team-Based Care Delivery

Community Health Management

Patient Experience

Care Team Experience

DATA STRATEGY - ACCESS METRICS



SAMPLE ACCESS & RELATED OPERATIONAL METRICS

Schedule Fill Rate - *(target 85-95%)*

New Patient Lag Time

No Show Rate

Cancellation Rate

Same Day Availability

Walk In Volume

After Hours Utilization

Appointment Timeliness

Patient Retention & Attrition

Continuity of Care

Provider Empanelment

Triage Call Volume

Call Center Performance Metrics

THANK YOU!

- Jen Calohan, RN, TQMP, SOLC, LSSBB
- COO, HealthTalk A.I.
- 360-470-8378
- jen@healthtalkai.com
- www.healthtalkai.com

Questions?

This presentation is supported by the Health Resources and Services Administration (HRSA) of the U.S. Department of Health and Human Services (HHS) as part of an award totaling \$550,000 with 0 percent financed with non-governmental sources. The contents are those of the author(s) and do not necessarily represent the official views of, nor an endorsement by, HRSA, HHS, or the U.S. Government.



Evaluation



Evaluation & Contact Hours: *Strengthening PC: Role of NP Residencies - Session 1* Nov 18, 2025

Thank you for participating in today's training, "Strengthening Health Center Primary Care: The Role of NP Residency Programs and Partnerships - Session 1." Please complete the following evaluation to provide feedback on the training and suggest future training topics. If you seek continuing nursing professional development contact hours, please provide the required information to receive your certificate. For any questions or concerns, please contact Regina Brecker at rbrecker@phmc.org.

Would you like Nursing Continuing Professional Development credit for this training? *

☐ Send me a copy of my responses



Certificate

Once you submit the evaluation, please wait approximately **20 minutes** for your certificate to arrive. It will come from “Smartsheet Automation,” and be linked at the **very bottom of the email** (as seen below). You will not need to request access.

NNCC Certificate for Optimizing Case Management for Patient-Centered T...

SA Smartsheet Automation <automation@app.smartsheet.com>
To Regina Brecker 10:27 AM

If there are problems with how this message is displayed, click here to view it in a web browser.

If you have any questions or need further assistance, please feel free to reach out to Jillian Bird at jbird@phmc.org or Regina Brecker at rbrecker@phmc.org

Thank you for your participation!

ANCC115 2025.09.25 Optimizing Case Mgmt-Telehealth

Details Changes since 9/25/25, 10:25 AM

1 row added , 1 row changed
1 attachment added


1 row added or updated (shown in yellow)

[Row 2](#)

First and Last Name	Regina Brecker
---------------------	----------------

Changes made by web-form@smartsheet.com, automation@smartsheet.com

1 attachment added

 [Optimizing Case Management for Patient-Centered Telehealth Care- Certificate.pdf](#) (126k) added by automation@smartsheet.com on Row 2: Regina Brecker



Access Health Center Resources

NNCC Resource Library



[Login](#) | [Join](#)

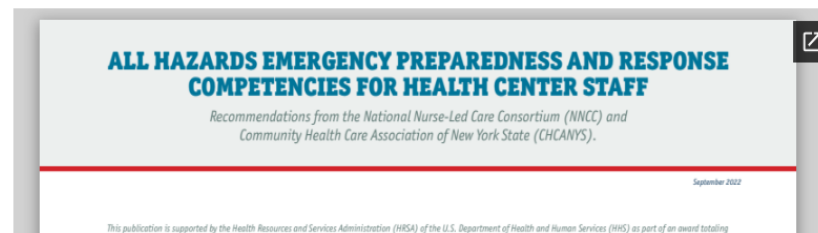
[About](#) [Programs](#) [Advocacy](#) [News & Resources](#) [Training](#)

[Subscribe](#)

Search NNCC

All Hazards Emergency Preparedness and Response Competencies for Health Center Staff

To successfully perform their assigned emergency/disaster roles, health center staff must understand how their organization will respond to hazards, including the use of altered management structures and modified operations. The National Nurse-Led Care Consortium (NNCC) and the Community Health Care Association of New York State (CHCANYS) created a set of competencies to improve the emergency and disaster preparedness of all health center staff. This publication provides a comprehensive overview of those competencies and sub-competencies, as well as a description of their development process. The competencies are intended to form the foundation of health center staff education and preparedness for all-hazards emergency and disaster response and will allow health centers to direct their limited training time and resources to cover the most essential preparedness aspects.



Upcoming Trainings

November 25th, 2025 - 3 pm EST

- Session 2: Strengthening Health Center Primary Care: The Role of NP Residency Programs and Partnerships
- Registration: https://us02web.zoom.us/webinar/register/WN_Rii2asnMRDmqR7QIUWR7PQ

December 16th, 2025 – 3 pm EST

- Comprehensive Case Management for Prenatal Care in FQHCs: Improving Access and Outcomes
- Registration: https://us02web.zoom.us/webinar/register/WN_tZvwoSTTT3-ey4vVznEgmg



Thank You!

If you have any further questions
or concerns please reach out to
Regina Brecker at rbrecker@phmc.org

Subscribe for the Latest Updates

Subscribing to our email newsletter is the best way to learn about all of
NNCC's free webinars and other online learning opportunities.

SUBSCRIBE

